



No.1069 KeYuan Road, ChangCheng Industry  
Zone, Yongkang, Zhejiang, China

**Hand press pole magic mop pole stainless steel 0.35mm**

tel.: 0086-571-877-07850  
Ex Tax: \$2.50

sales@bncompany.com |  
<https://www.bncompany.com/>





No.1069 KeYuan Road, ChangCheng Industry  
Zone, Yongkang, Zhejiang, China

tel.: 0086-571-877-07850

sales@bncompany.com |  
<https://www.bncompany.com/>



## Eco friendly Telescopic Handle Type and Aluminum Pole Material

### **Specifications**

|                  |  |
|------------------|--|
| Name             | telescope mop handle                     |
| Brand            | BN                                       |
| Features         | magic,foldable, telescopic,extensible    |
| Material of pole | 0.35mm thickness of stainless steel      |
| Length of pole   | 1.25m-1.60m                              |
| Weight           | 0.482kg or 0.538kg (based on 1.25m pole) |
| Diameter of pole | 20mm/22mm/22mmm or 22mm/25mm/25mmm       |
| Material of disc | PP and Stainless Steel                   |
| Diameter of disc | 16cm                                     |
| Packing Method   | 1pole/opp,60poles/carton;200disc/carton  |



No.1069 KeYuan Road, ChangCheng Industry  
Zone, Yongkang, Zhejiang, China

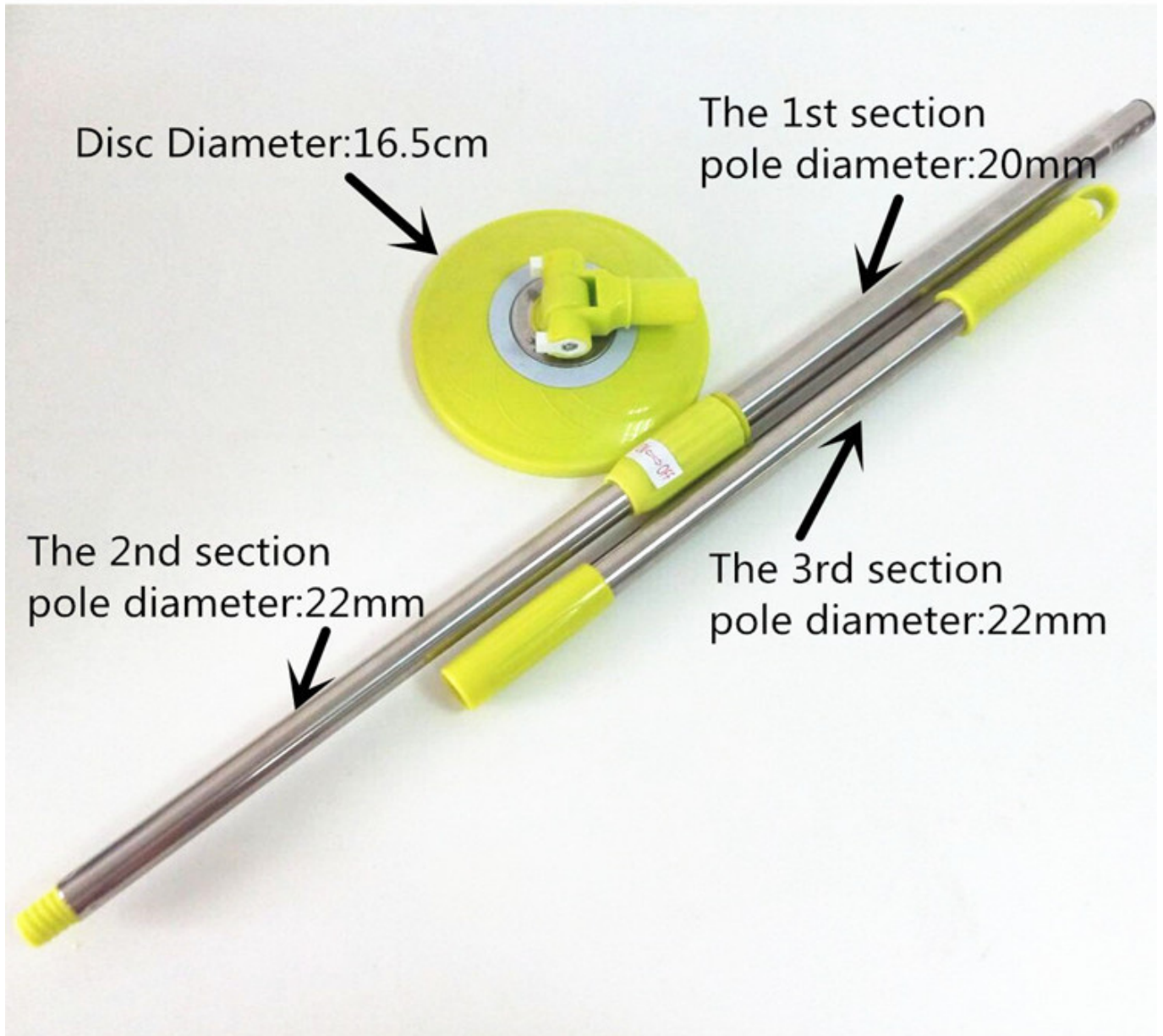
Loading quantity 13400pcs/ 20FT; 32600 pcs/ 40HQ

MOQ 1000pcs

tel.: 0086-571-877-07850

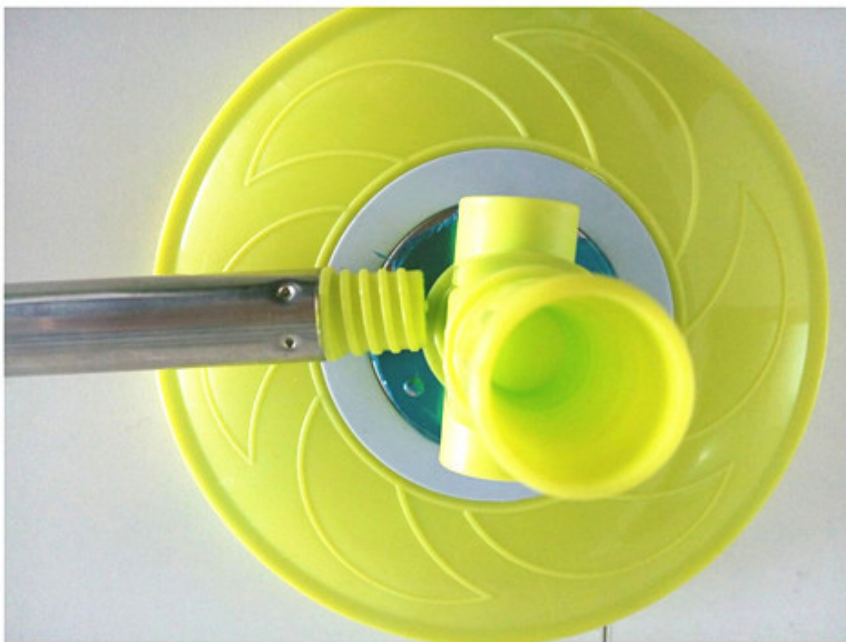
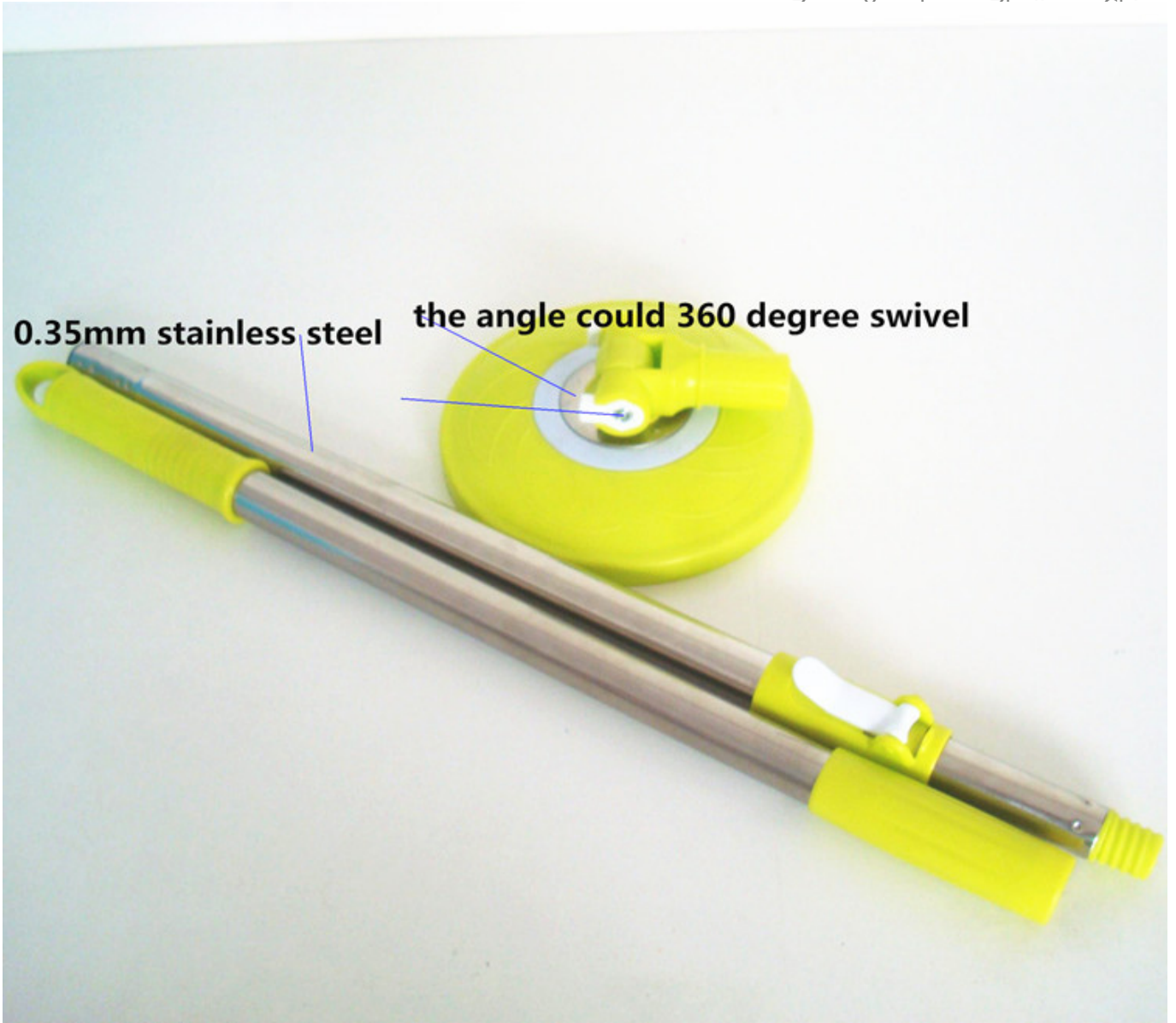
sales@bncompany.com |  
<https://www.bncompany.com/>

## **Product display**





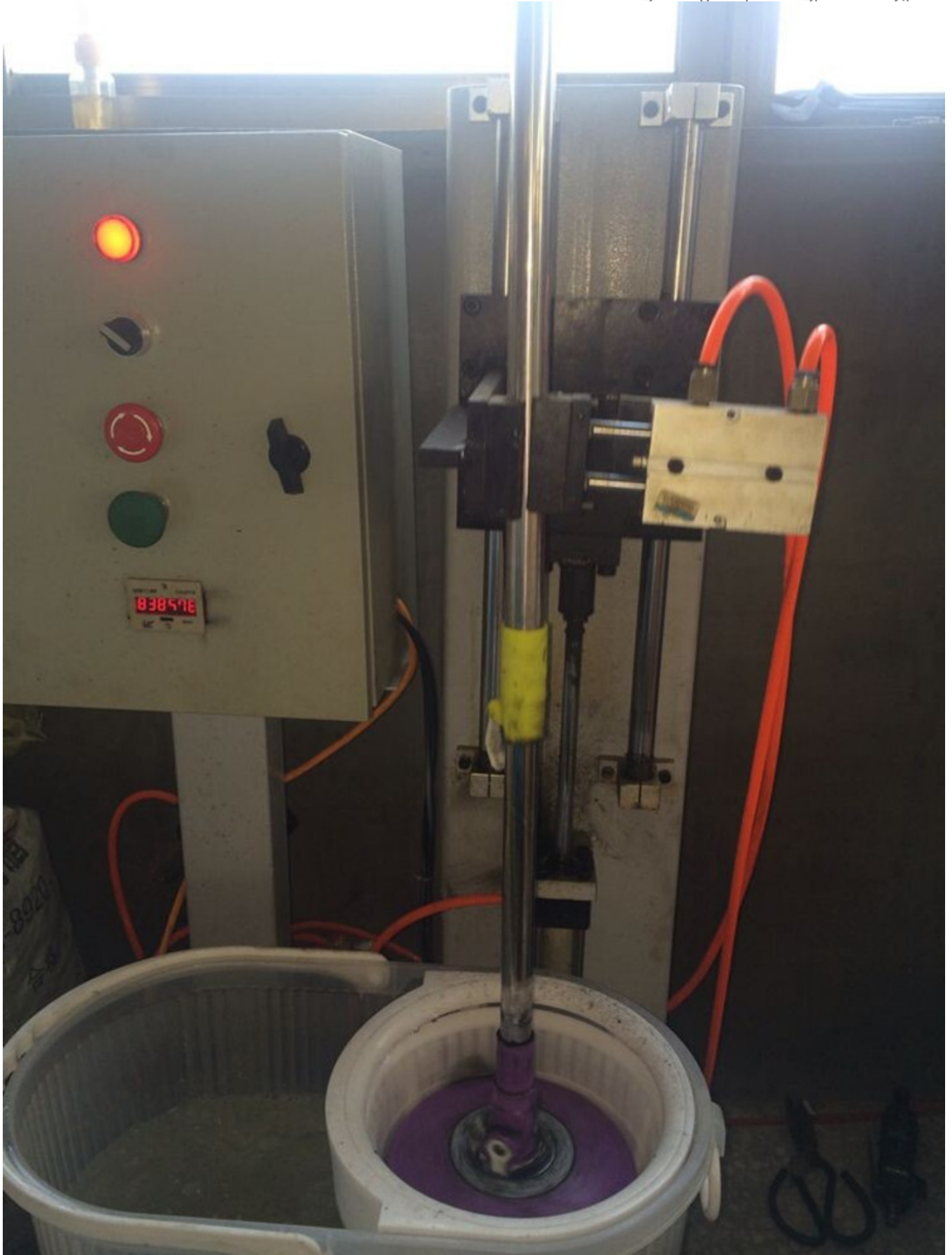
0.35mm stainless steel the angle could 360 degree swivel





### **Quality advantage**

We use **0.35mm** stainless steel to build the sturdiest handle,our pole could be using **310,000-830,000** times, and even more (But other factory's pole using 3000 times then broken);



**Normal Packing Details** (1pole/opp bag,60 poles/ carton; 200



No.1069 KeYuan Road, ChangCheng Industry Zone, Yongkang, Zhejiang, China

*discs/carton)*



**More color available**



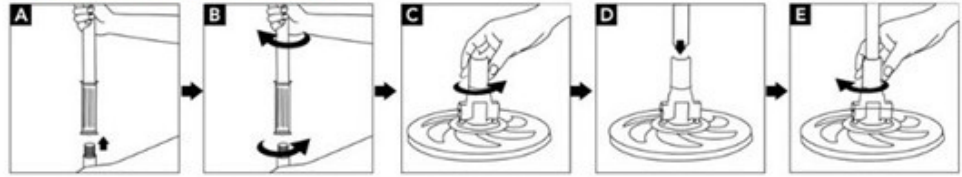


***Assemble process***

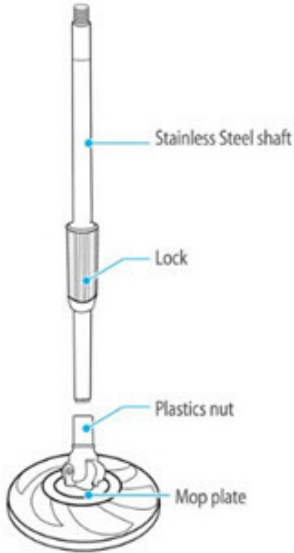




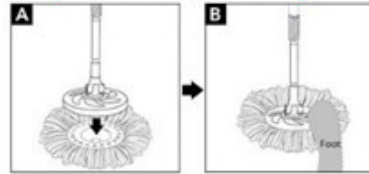
### Mop handle Assembling



1. Screw top pole clockwise into bottom pole until tight
2. Screw bottom pole clockwise into base until tight.

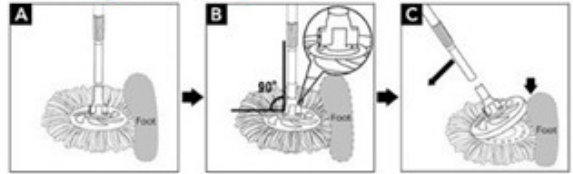


### Mop head Assembling

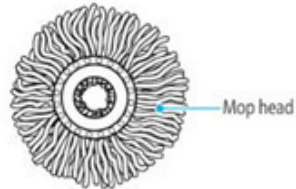


Put the plastic plate directly on the plastic disk of mop head. When faced, please put your foot on the plate to step tightly.

### Change the mop refill



To remove the mop head, put your foot on the side of the refill and push the handle to the opposite direction.



VIP Service by Cherry Wu



Zhejiang Baining Industry & Trade Co.Ltd.

Factory ADD: No.1069 KeYuan Road, ChangCheng Industry Zone, Yongkang ,zhejiang ,China

Sales Office : Room 707,Building 3,Yunlifang Technology Park ,No.181 Wuchang Road,Yuhang District, Hangzhou city, China 310023

Web Site: [www.bncompany.com](http://www.bncompany.com) Email: [sales1@cnzjbn.com](mailto:sales1@cnzjbn.com)

Cell: 0086-183-679-10058 Tel: 0086-571-87707850

Skype:baining001 QQ: 2850687601





No.1069 KeYuan Road, ChangCheng Industry  
Zone, Yongkang, Zhejiang, China

tel.: 0086-571-877-07850

sales@bncompany.com |  
<https://www.bncompany.com/>

[https://www.bncompany.com/Hand\\_press\\_pole\\_\\_magic\\_mop\\_pole\\_stainless\\_steel\\_0.35mm\\_.html](https://www.bncompany.com/Hand_press_pole__magic_mop_pole_stainless_steel_0.35mm_.html)